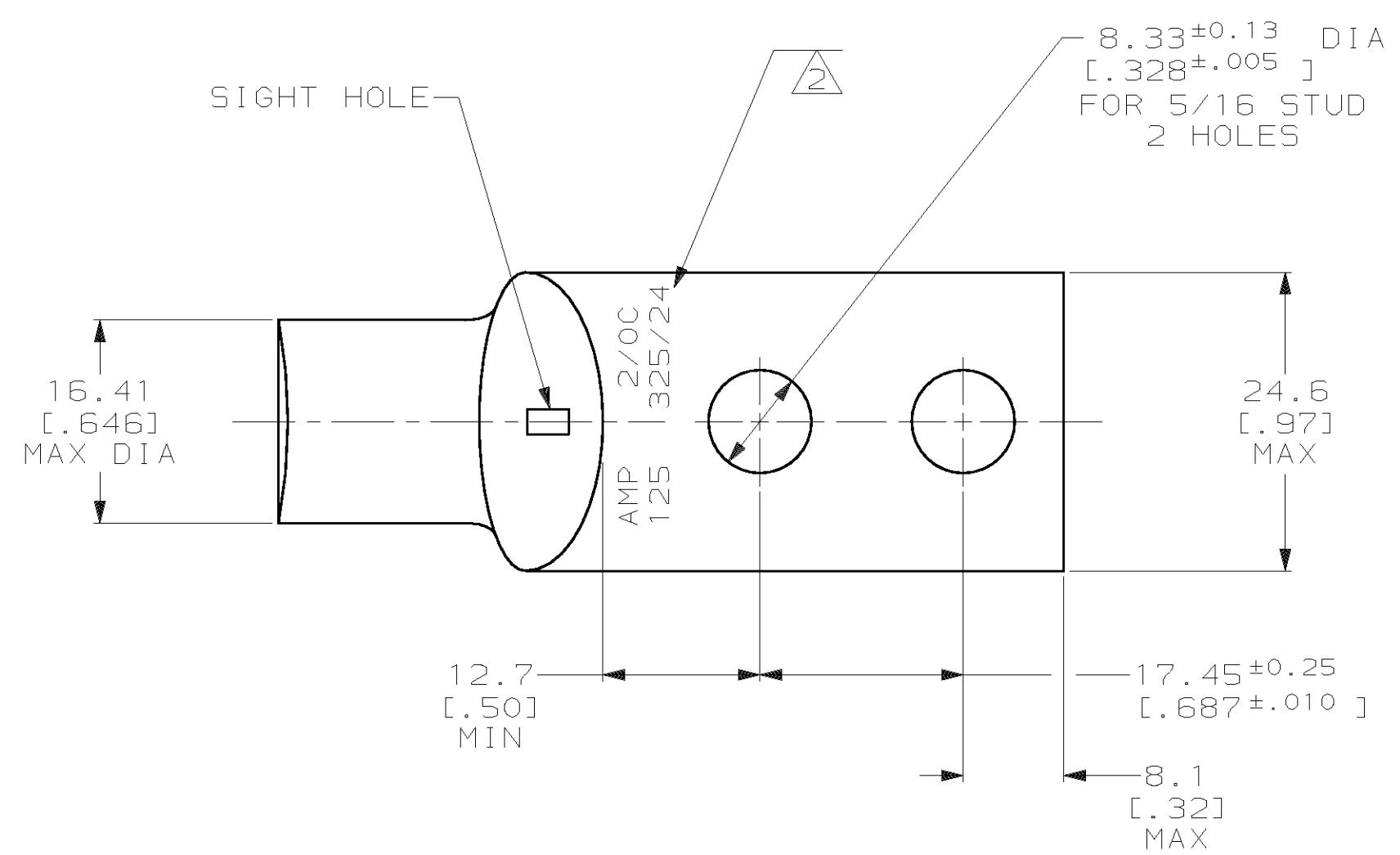
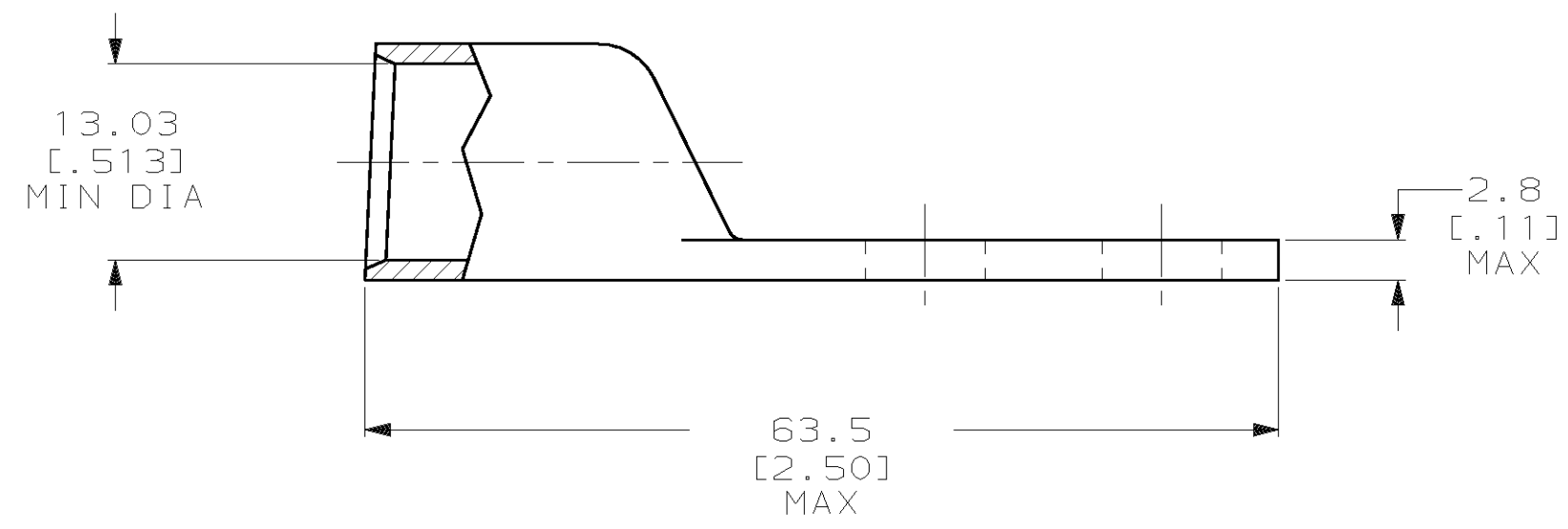


THIS DRAWING IS UNPUBLISHED. RELEASED FOR PUBLICATION, 19 .  
 © COPYRIGHT 19 BY AMP INCORPORATED. ALL INTERNATIONAL RIGHTS RESERVED.

LOC		DIST		P		F		ZONE		LTR		REVISIONS		DATE	APPD
G		86								A		REV PER 0G3A-0561-01		07OCT02	JR MS



1 CIRCULAR MIL RANGE: 119,500-150,500 CM  
 2 STAMP CHARACTERS APPROX AS SHOWN



THIS DRAWING IS A CONTROLLED DOCUMENT FOR AMP INCORPORATED. IT IS SUBJECT TO CHANGE AND THE CONTROLLING ENGINEERING ORGANIZATION SHOULD BE CONTACTED FOR THE LATEST REVISION.

DO NOT SCALE PRINT. UNLESS SPECIFIED DIMENSIONS IN mm [INCHES] TOLERANCES ON :		DR 23AUG94 DK SCHRUM		AMP Incorporated Harrisburg, PA 17105-3608	
2 PLC DEC ± -		CHK 25AUG94 AJ KAUFMAN			
3 PLC DEC ± -		APPD 25AUG94 RE ROSER		NAME	
ANGLES ± -		APPD 25AUG94 JL MECKLEY		TERMINAL, AMPOWER, WIRE SIZE: 2/0 AWG	
MATERIAL		PRODUCT SPEC		SIZE	
COPPER PER ASTM B-75 ANNEALED		-		CAGE CODE	
FINISH		APPLICATION SPEC		DRAWING NO	
TIN PLATE		-		00779	
0.00381 [.000150] MIN THK PER MIL-T-10727		WEIGHT .079 LBS		C=55992	
		SCALE 2:1		SHEET 1 OF 1	

55992-1  
PART NO